



Fuse COS

Fuse changeover switch
from 125 to 630 A

Changeover
switches



The solution for

- > Safe supply of medium critical loads, with protection



Strong points

- > Safe and easy to use
- > Stable positions
- > Large connection capabilities for direct aluminium cable connection
- > Overload and short-circuit current protection up to 80kA

Conformity to standards

- > IS/IEC 60947-3



Approvals and certifications

- > CPRI

Function

The **SOCOMECS fuse COS** is a manually operated 4 poles changeover with protective devices as HRC fuses mounted on the load side. The switch is provided with an isolating neutral and offers protection against overload and short-circuit in position I and II.

Operations

Direct

The pad lockable handle is mounted directly on the Fuse COS and lockable in OFF position.

External

The pad lockable handle is to be mounted on the panel door and lockable in OFF position. The external front operation ensures that the door is interlocked in ON position.

General Characteristics

- 3 stable positions (I - O - II)
- Bridging Bars mounted on all ratings as standard
- Very compact design
- Resistant to Tropical conditions and Polluted environment
- Quick Make & Quick Break
- High thermal and Dynamic withstand capacity
- Available in open execution and Sheet Steel Enclosure for top or bottom cable connection
- High performance: AC23 Category
- Bounce Free contacts
- Unique Safety Handle with built in door Padlock facility
- High Electrical and Mechanical Endurance
- BS type HRC fuses
- Prospective short-circuit rating with fuses up to 80kA rms

Characteristics

125 to 630 A

References	Fuse COS from 125 to 630 A					
	GF01254POI ⁽¹⁾	GF02004POI ⁽¹⁾	GF02504POI ⁽¹⁾⁽²⁾	GF03204POI ⁽¹⁾	GF04004POI ⁽¹⁾⁽²⁾	GF06304POI ⁽¹⁾⁽²⁾
Thermal current I_{th} (40°C)	125 A	200 A	250 A	320 A	400 A	630 A
Max. Normal rating of fuses	125	200	250	315	400	630
Insulation voltage U _i (V)	1000	1000	1000	1000	1000	1000
Dielectric strength (V) 50 Hz 1 mn.	5000	5000	5000	5000	8000	8000
Impulse voltage (kV)	6	6	8	8	12	12

Rated operational currents I_e (A)

415 VAC-AC 23A	125	200	250	320	400	630
500 VAC-AC 23A	100	160	200	250	315	315
260 VDC-DC 21A	125	200	250	320	400	630
260 VDC-DC 22A	125	200	250	320	400	500
260 VDC-DC 23A	125	160	200	250	400	500
440 VDC-DC 21A	125	200	250	320	400	500
440 VDC-DC 22A	125	160	200	250	400	500
440 VDC-DC 23A	125	160	200	250	400	500

Motor power (kW) 415V

415 VAC without pre-break Aux. contact	63	80	132	160	200	220
500 VAC without pre-break Aux. contact	63	63	140	220	220	220
690 VAC without pre-break Aux. contact	55	55	90	150	150	150
415 VAC with pre-break Aux. contact	63	80	132	160	220	355
500 VAC with pre-break Aux. contact	80	80	160	220	280	355
690 VAC with pre-break Aux. contact	110	110	110	220	220	295
Motor reactive 415 VAC (kVAR)	55	60	100	125	150	2 x 125

Protection

Short-circuit current with fuses (kA rms)	80	80	80	80	80	80
Fuse rating	125	200	250	315	400	630
Fuse type	A4	A4	B1	B1	C1	C1
Peak short-circuit making capacity (kA rms)	20	20	30	45	45	45
Admissible short time current 1 sec (kA rms)	7	7	9	13	13	13

Making & breaking characteristics

Breaking capacity (A rms) 415 VAC pf-0.35	1000	1600	2000	2520	3200	5040
Making capacity (A rms) 415 VAC pf-0.35	1250	2000	2500	3150	4000	6300

Endurance

Mechanical No. of operations	8000	8000	8000	5000	5000	5000
Electrical No. of operations	1000	1000	1000	1000	1000	1000
Operating force (Nm)	9.5	9.5	11	11	17	17

Connection

Min. Cu cable/bus bar size (mm ²)	50	95	120	185	30x5x2	40x5x2
Min. Al cable/bus bar size (mm ²)	70	150	185	240	32x8x2	40x8x2

1. Includes switch + handle + door interlock.

2. A NO/NC factory fitted.

Fuse COS

Fuse changeover switch
from 125 to 630 A

Accessories

Handle

Rating (A)	Reference
125	4299 0003GI
200...250	4299 0005GI
320	4299 0007GI
400	4299 0008GI
630	4299 0009GI



access_288_a_1_cat

Door Interlock assembly

Rating (A)	Reference
125...630	4259 0003GI



access_290_a_1_cat

Bridging bars

Rating (A)	Reference
125	41094013F-SA
200...320	41094032F-SA
400	41094040F-SA
630	41094063F-SA



access_205_a

Auxiliary Contact

1st Auxiliary Contact

Rating (A)	Reference
125...630	42091040GI

2nd Auxiliary Contact

Rating (A)	Reference
125...630	42092040GI



access_065_a

Phase barrier

Rating (A)	Reference
125	G89B 595GI
200...320	G89B 596GI
400...630	G89B 597GI



access_036_a

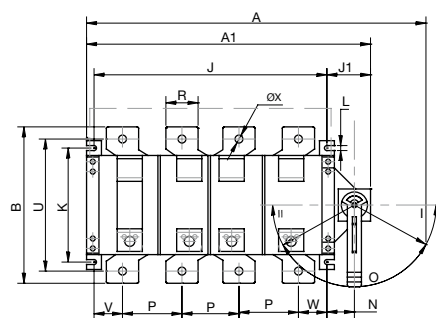
Fuse barrier

Rating (A)	Reference
125	G891 088GI
200...320	G891 157GI
400...630	G89B 594GI

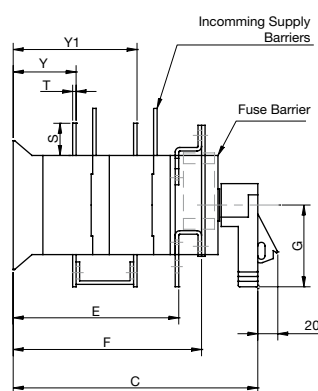
Dimensions (mm)

125 to 630 A

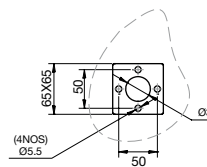
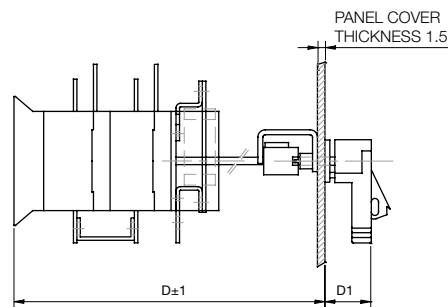
Direct front operation



sfc_002_a_1_x_cat



External front operation



DOOR DRILLING FOR INTERLOCK ASSY. MOUNTING

Rating (A)	Overall dimensions						Fixing of Sw.						Connection terminal						Sw. Wt. Open Ex. (kg)						
	A	A1	B	C	D	D1	E	F	G	J	J1	K	L	N	P	R	S	T		U	V	W	ØX	Y	Y1
4 x 125	305	232	142	275	287	65	150	185	118	159	58	95	7.0	26	45	22	28	3.0	118	12	12	8.5	54	120	5.5
4 x 200	363	285	192	315	328	65	177	208	130	212	63	111	7.5	27	64	32	46	4.5	152	7	13	12	62	140	10.2
4 x 250	363	285	192	315	328	65	177	208	130	212	63	111	7.5	27	64	32	46	4.5	152	7	13	12	62	140	10.2
4 x 320	363	285	192	315	328	65	177	208	130	212	63	111	7.5	27	64	32	46	4.5	152	7	13	12	62	140	10.2
4 x 400	458	360	235	401	413	65	254	298	142	271	80	180	9.0	45	73	40	40	5.0	205	26	26	11	84	195	19.3
4 x 630	458	360	270	401	413	65	254	298	142	271	80	180	9.0	45	81	55	55	5.0	230	14	14	14.5	84	195	25.6