



ATyS d H

Remotely operated Transfer Switching Equipment
from 4000 to 6300 A

Transfer switches

new



atyS_0665_a

Function

The ATyS d H is a three-phase transfer switch, 3 and 4 poles, designed for low voltage high power applications that require a high performance and fast reliable switching. The open transition transfer is performed on-load in line with IEC 60947-6-1 and GB 14048-11 standards (Class PC) with minimal power supply interruption to the load during transfer.

The ATyS d H is remote transfer switching equipment (RTSE) with an integrated dual power supply (DPS) that accepts remote orders through volt-free contacts.

Advantages

Ready for installation in the enclosure of your choice

The ATyS d H has been designed to facilitate installation as it is available as a fixed or completely withdrawable type of transfer switch. It is composed of two switches that are mounted one above the other with easily accessible power connections located at the rear. Furthermore the ATyS d H does not need any external bridging bars as the load side is connected within the product. This enables to save time during installation.

High performance switching

The ATyS d H offers high withstand short circuit current ratings of 143kA I_{cm} (making) and 65kA for 0.1 sec I_{cw} (withstand). Further to its high short circuit withstand, the ATyS d H performance in terms of load switching capacity is AC33iB (6xI_n cos Ø 0.5) without derating.

Safe on-load transfer: I-0-II

The ATyS d H includes two mechanically interlocked switches to ensure fast switching whilst providing a neutral (Off - 0) position. This ensures that the main and alternative power supplies do not overlap. The 0 position can also be used for safe maintenance of the installation, providing isolation between both sources and the load.

The solution for

- > Data centre
- > Telecommunications
- > Industries



Strong points

- > Ready for installation in the enclosure of your choice
- > High performance switching
- > Safe on-load transfer: I-0-II

Conformity to standards

- > IEC 60947-6-1
- > GB 14048-11



Approvals and certifications



Enclosed solution

- > Please contact your SOCOMECC office

External automatic controller

- > The ATyS d H is an RTSE which is compatible with most building management systems. It may also be supplied as an ATSE including an ATyS C20/C30/C40 controller with a door mounted external display.

References

4000 to 6300 A

Rating (A)	Type	Number of poles	ATyS d H IEC	ATyS d H CCC	Control relay
4000 A	Fixed	3 P	9533 3400	9533 3400 CN	ATyS C20 1599 3020 ATyS C30 1599 3030 ATyS C40 1599 3040
		4 P	9533 4400	9533 4400 CN	
	Drawout	3 P	9533 3401	9533 3401 CN	
		4 P	9533 4401	9533 4401 CN	
5000 A	Fixed	3 P	9533 3500	9533 3500 CN	
		4 P	9533 4500	9533 4500 CN	
	Drawout	3 P	9533 3501	9533 3501 CN	
		4 P	9533 4501	9533 4501 CN	
6300 A	Fixed	3 P	9533 3630	9533 3630 CN	
		4 P	9533 4630	9533 4630 CN	
	Drawout	3 P	9533 3631	9533 3631 CN	
		4 P	9533 4631	9533 4631 CN	

Caractéristiques selon CEI 60947-6-1

4000 à 6300 A

Thermal current I_{th} at 40°C	4000 A	5000 A	6300 A
Rated operating voltage U_e (V)	660		
Rated insulation voltage U_i (V)	660		
Rated impulse withstand voltage U_{imp} (kV)	12		
Rated short-circuit withstand at 660 VAC			
Rated short-time withstand current 0.1s I_{cw} (kA rms)	65		
Rated peak withstand current (kA peak)	143		
Rated operational current I_a (A), at 660 VAC - AC32B	4000	5000	6300
Rated operational current I_a (A), at 660 VAC - AC33iB (6xln cos ϕ 0.5)	4000	5000	6300
Connection			
Rear connection with busbar	•	•	•
Switching time			
I to 0 (ms)	≤ 150		
0 to I and 0 to II (ms)	≤ 90		
II to 0 (ms)	≤ 200		
I-0-II / II-0-I (s)	1,2		
Operating frequency	10 manœuvres par heure		
Power supply			
VAC power supply (powered directly on terminals S1 and S2)	230		
Main coil operating current (peak during transfers)	65 A ⁽¹⁾		
Mechanical characteristics			
Durability (number of operating cycles)	3000		
Weight (kg) - Fixed 3/4P model	200 / 250	200 / 250	200 / 250
Weight (kg) - Plug-in 3/4P model	300 / 400	300 / 400	300 / 400

(1) Instantaneous value. For a complete operation, power should be available during 0.5 s.

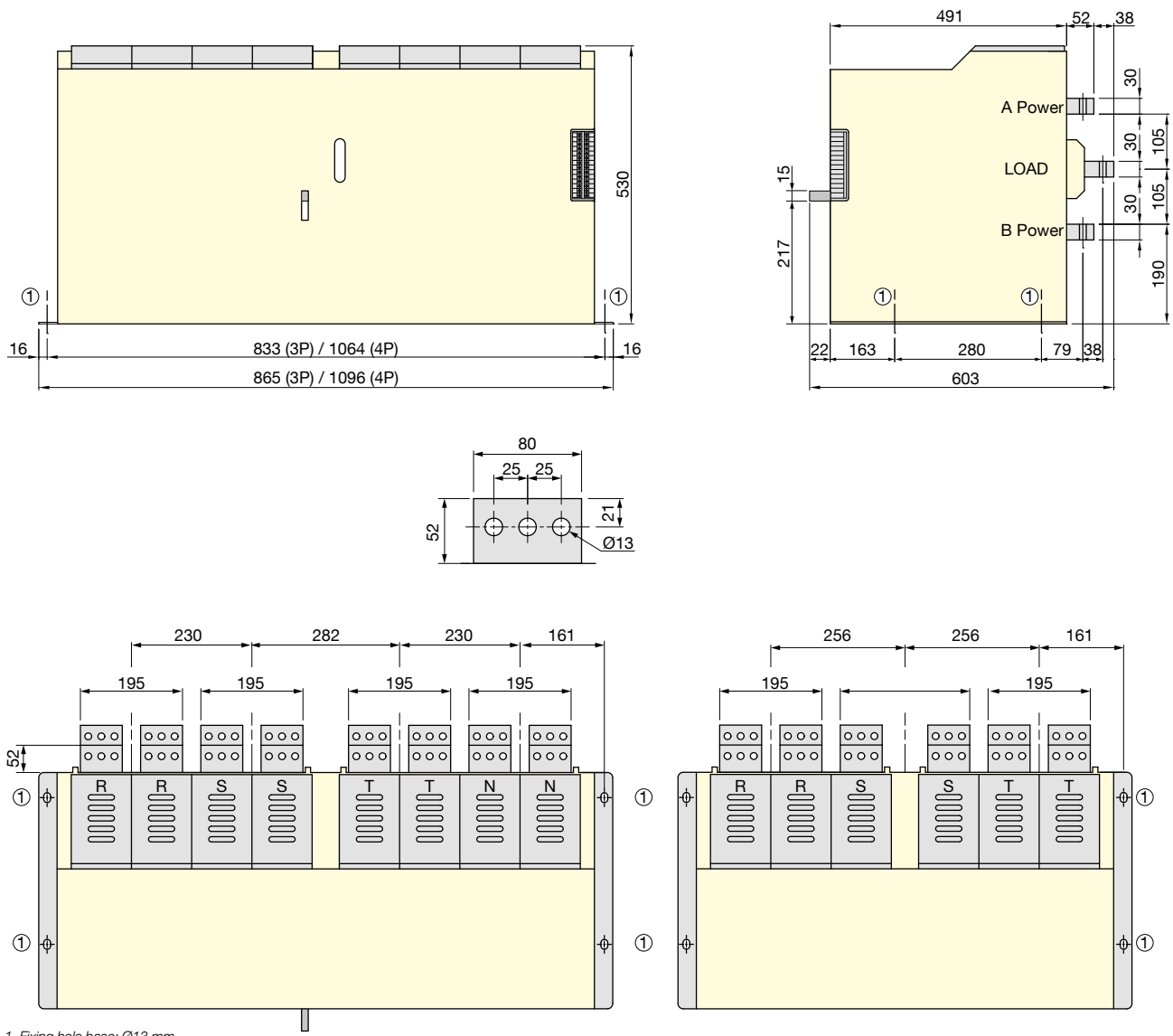
ATyS d H

Remotely operated transfer switches

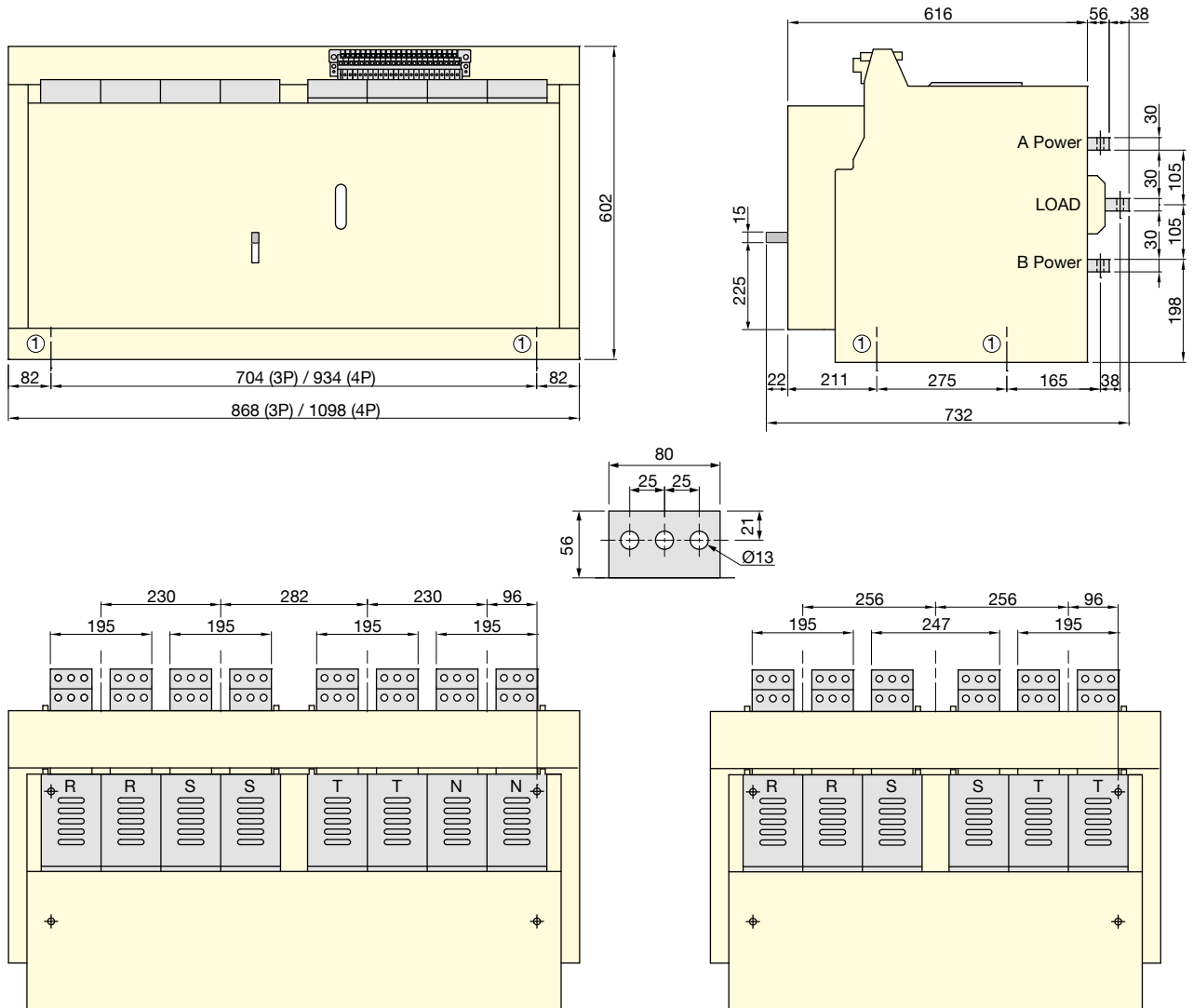
from 4000 to 6300 A

Dimensions

Dimensions for fixed models



Dimensions for drawout models



atyS-dH_007_a_1_x_cat

1. Fixing hole base: $\varnothing 13$ mm