



ATyS p

Automatic Transfer Switching Equipment from 125 to 3200 A

Transfer switches

atyS-p_001_Lb



The solution for

- > Applications requiring power management and communication.



Strong points

- > Optional communication modules
- > Recording of events
- > Configuration software
- > Power measurements
- > Possibility to set periodic genset startup

Conformity to standards

- > IEC 60947-6-1
- > IEC 60947-3



Webserver

The Webserver function comprises HTML pages embedded in the Ethernet communication module.

These pages can be accessed via an internet browser, simply by entering the IP address.

The webservice offers the following functionalities:

- > Display of source status and switch position
- > Display of the main measurements
- > Extraction of the latest logged events
- > Display of the product configuration

Function

ATyS p are three-phase automatic transfer switches, 3 or 4 poles, with positive break indication. They incorporate all the functions offered by the ATyS t and g, as well as functions designed for **power management and communication**.

In automatic mode they enable the monitoring of, and the on load changeover switching between, two power supply sources, in accordance with the parameters configured via an LCD display or via the communication.

They are intended for use in low voltage power supply systems where a brief interruption of the load supply is acceptable during transfer.

Advantages

Recording of events

ATyS p switches enable effective monitoring of your installation thanks to timestamped event recording.

Events can be retrieved and read via the communication system.

Optional communication modules

The ATyS p offers communication functions thanks to the addition of optional modules, such as the RS485 module for Modbus communication or the Ethernet module, which includes a Webservice.

Configuration software

Software (Easyconfig) is available enabling the ATyS p parameters to be easily configured and the existing configuration to be saved.

Power measurements

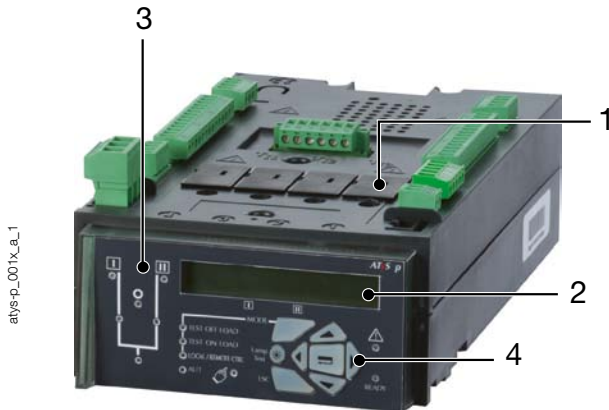
ATyS p products are particularly suited to energy management and monitoring.

In addition to their integrated power and energy measurement functions (with a 2% accuracy level), programmable inputs/outputs can be utilised to control load shedding based on a load level or tariff.

Possibility to set periodic genset startup

ATyS p switches offer additional functions for maintenance. They include the programmed genset starting function which allows the starting dates and operating times to be configured.

Front panel



1. Slots for optional plug-in modules.
2. Backlit LCD display.
3. Source availability and position indication LEDs.
4. Pushbuttons for programming and mode selection.

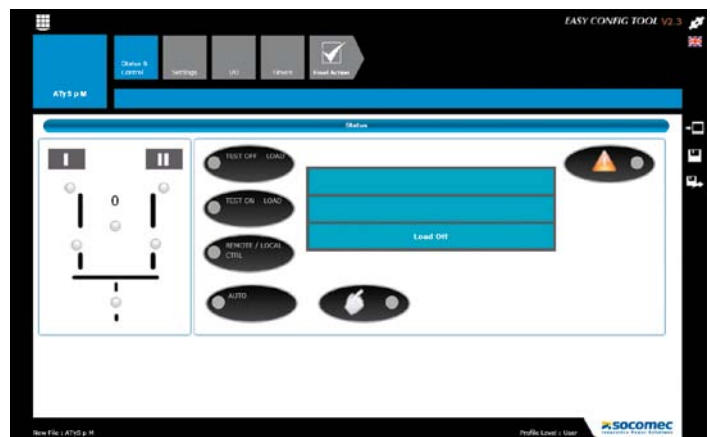
Communication and configuration

Easyconfig

The **Easyconfig software** is the ideal solution to save time and simplify complex configuration.

Typical parameters that can be set:

- the application type,
- voltage/frequency thresholds,
- timers,
- inputs/outputs...



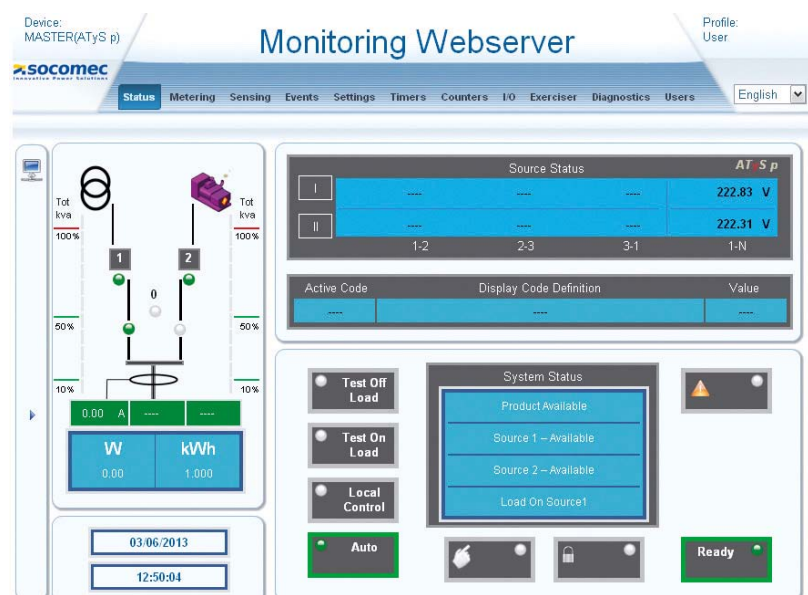
Web Server

Thanks to optional modules, ATyS p can communicate in **Modbus** and **Ethernet** protocols.

The Ethernet communication module includes the **Webserver** function for access to the ATySp via an internet browser.

The Webserver function enables:

- display of source status and switch position,
- display of voltage measurements,
- display of parameters set,
- access to the list of logged events.



References

Rating (A) / Frame size	No. of poles	ATyS p	Bridging bars	Voltage sensing and power supply tap	Terminal shrouds	Terminal screens	Optional modules	Auxiliary contact
125 A / B3	3 P	9573 3012						
	4 P	9573 4012						
160 A / B3	3 P	9573 3016	3 P 4109 3019	3 P 1559 3012	3 P 2694 3014 ⁽²⁾	3 P 1509 3012		
	4 P	9573 4016	4 P 4109 4019	4 P 1559 4013 ⁽¹⁾	4 P 2694 4014 ⁽²⁾	4 P 1509 4012		
200 A / B3	3 P	9573 3020						
	4 P	9573 4020						
250 A / B4	3 P	9573 3025	4109 3025					
	4 P	9573 4025	4109 4025					
315 A / B4	3 P	9573 3031		3 P 1559 3025	3 P 2694 3021 ⁽²⁾	3 P 1509 3025	RS485 MODBUS communication 4825 0092	1599 0002 ⁽⁴⁾
	4 P	9573 4031		4 P 1559 4026 ⁽¹⁾				
400 A / B4	3 P	9573 3040	3 P 4109 3039	3 P 1559 3040			2 inputs / 2 outputs 1599 2001	
	4 P	9573 4040	4 P 4109 4039	4 P 1559 4041 ⁽¹⁾				
500 A / B5	3 P	9573 3050	4109 3050		3 P 2694 3051 ⁽²⁾	3 P 1509 3063 ⁽³⁾	Ethernet communication 4825 0203	
	4 P	9573 4050	4109 4050					
630 A / B5	3 P	9573 3063	4109 3063	3 P 1559 4064 ⁽¹⁾	4 P 2694 4051 ⁽²⁾	4 P 1509 4063 ⁽³⁾	Ethernet communication + RS485 MODBUS gateway 4825 0204	
	4 P	9573 4063	4109 4063	4 P 1559 4081 ⁽¹⁾				
800 A / B6	3 P	9573 3080		3 P 1559 3080			Analogue outputs 4825 0093	
	4 P	9573 4080		4 P 1559 4081 ⁽¹⁾				
1000 A / B6	3 P	9573 3100	4109 4080			3 P 1509 3080 ⁽³⁾	Pulse outputs 4825 0090	1599 0032 ⁽⁴⁾
	4 P	9573 4100	4 P 1509 4080 ⁽³⁾					
1250 A / B6	3 P	9573 3120	4109 3120	3 P 1559 3120				
	4 P	9573 4120	4109 4120	4 P 1559 4121 ⁽¹⁾				
1600 A / B7	3 P	9573 3160	4109 3160	3 P 1559 3160		1509 3160 ⁽³⁾		
	4 P	9573 4160	4109 4160	4 P 1559 4161 ⁽¹⁾		1509 4160 ⁽³⁾		
2000 A / B8	3 P	9573 3200						
	4 P	9573 4200						
2500 A / B8	3 P	9573 3250	(1)	3 P 1559 3200		3 P 1509 3200 ⁽³⁾		included
	4 P	9573 4250		4 P 1559 4201 ⁽¹⁾		4 P 1509 4200 ⁽³⁾		
3200 A / B8	3 P	9573 3320						
	4 P	9573 4320						

(1) Neutral on the left (for neutral on the right, see page 72).

(2) To fully shroud front, rear, top and bottom 4 references required.

To shroud front switch top and bottom 2 references required.

(3) 2 pieces: one for top side and another for bottom side.

(4) Factory mounting only.

Rating (A) / Frame size	No. of poles	ATyS p ⁽²⁾	DC power supply	3 position padlocking	Key handle interlocking system	Door protective surround	Mounting spacers	Remote control interface
125 A / B3	3 P	9573 3012	12 VDC / 230 VAC 1599 5012 24 VDC / 230 VAC 1599 5112	9599 0003 ⁽¹⁾	Using lock RONIS EL11AP in position 0 9599 1006 ⁽¹⁾	1539 0012	1 set of 2 spacers 1509 0001	ATyS D20 9599 2020 + RJ45 cable connection 1599 2009
	4 P	9573 4012						
160 A / B3	3 P	9573 3016						
	4 P	9573 4016						
200 A / B3	3 P	9573 3020						
	4 P	9573 4020						
250 A / B4	3 P	9573 3025						
	4 P	9573 4025						
315 A / B4	3 P	9573 3031						
	4 P	9573 4031						
400 A / B4	3 P	9573 3040						
	4 P	9573 4040						
500 A / B5	3 P	9573 3050						
	4 P	9573 4050						
630 A / B5	3 P	9573 3063						
	4 P	9573 4063						
800 A / B6	3 P	9573 3080						
	4 P	9573 4080						
1000 A / B6	3 P	9573 3100						
	4 P	9573 4100						
1250 A / B6	3 P	9573 3120						
	4 P	9573 4120						
1600 A / B7	3 P	9573 3160						
	4 P	9573 4160						
2000 A / B8	3 P	9573 3200						
	4 P	9573 4200						
2500 A / B8	3 P	9573 3250						
	4 P	9573 4250						
3200 A / B8	3 P	9573 3320						
	4 P	9573 4320						

(1) Factory mounting only.